

PART OF E 1/2 SEC. 13, & N.W. 1/4 SEC. 14, T.3N., R.1W., S.1.S. & M.

272

# SHADOW VALLEY ESTATES NO. 10

AMENDED PLAT

LOTS 114 TO 119

IN OGDEN CITY

SCALE 1" = 50'

PREFIX 07-272

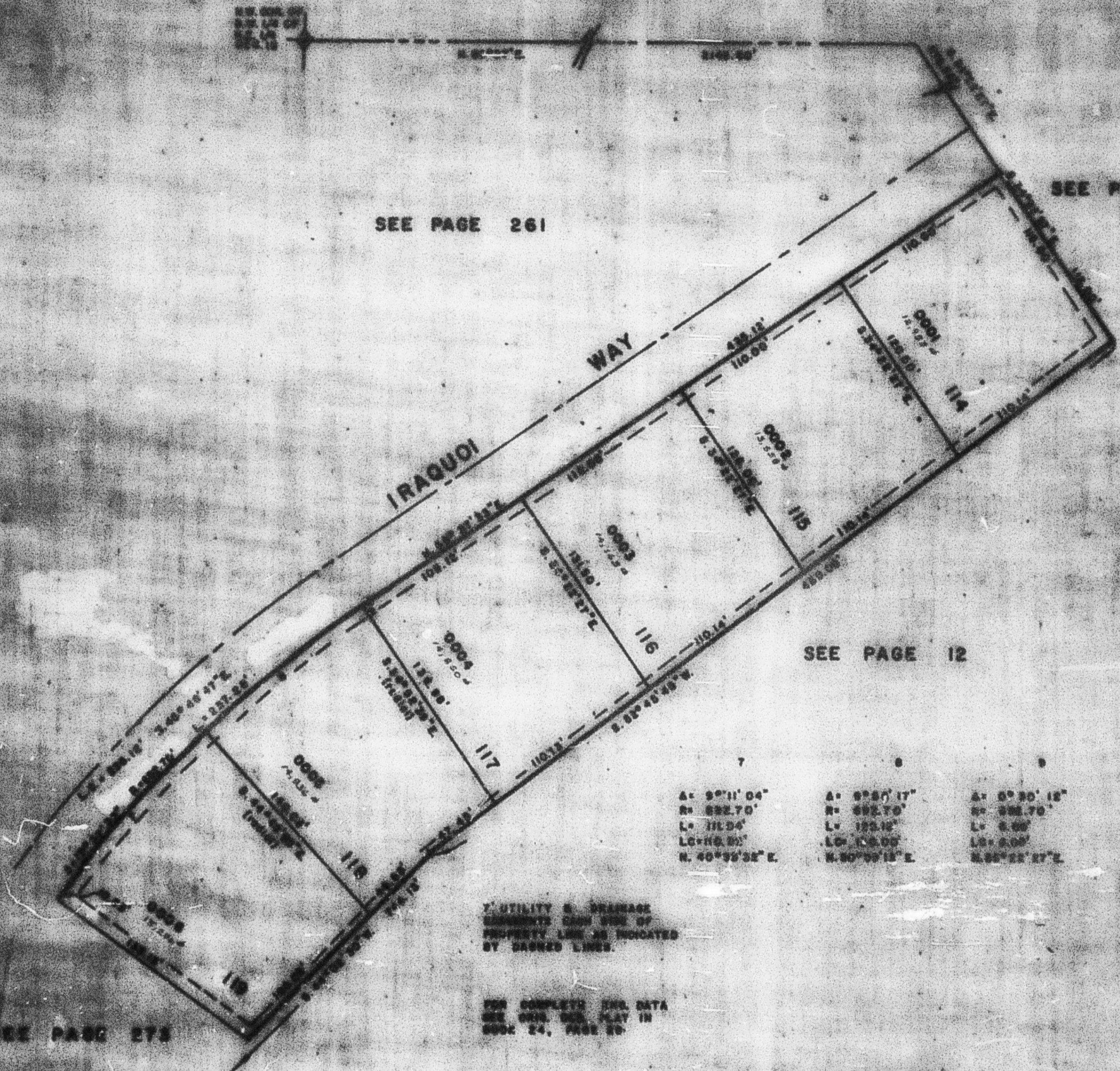
EXCEPT AS HEREIN OTHERWISE SPECIFIED ALL LINES CORRECTED BY WESTERN MAPPING COMPANY

TRADING UNIT 25

SEE PAGE 261

SEE PAGE 261

SEE PAGE 12



SEE PAGE 12

7	8	9
A = 90°11'04"	A = 87°57'17"	A = 87°30'15"
R = 882.70'	R = 882.70'	R = 882.70'
L = 112.04'	L = 125.16'	L = 6.00'
LC = 112.04'	LC = 125.16'	LC = 6.00'
N. 40°55'32" E.	N. 50°55'15" E.	N. 55°22'27" E.

UTILITY & DRAINAGE EASEMENTS EACH SIDE OF PROPERTY LINE AS INDICATED BY DASHED LINES.

FOR COMPLETE END DATA SEE OUR END PLAT IN BOOK 24, PAGE 29.

SEE PAGE 273